



## POWERNEXT DAY-AHEAD™ STATISTICS

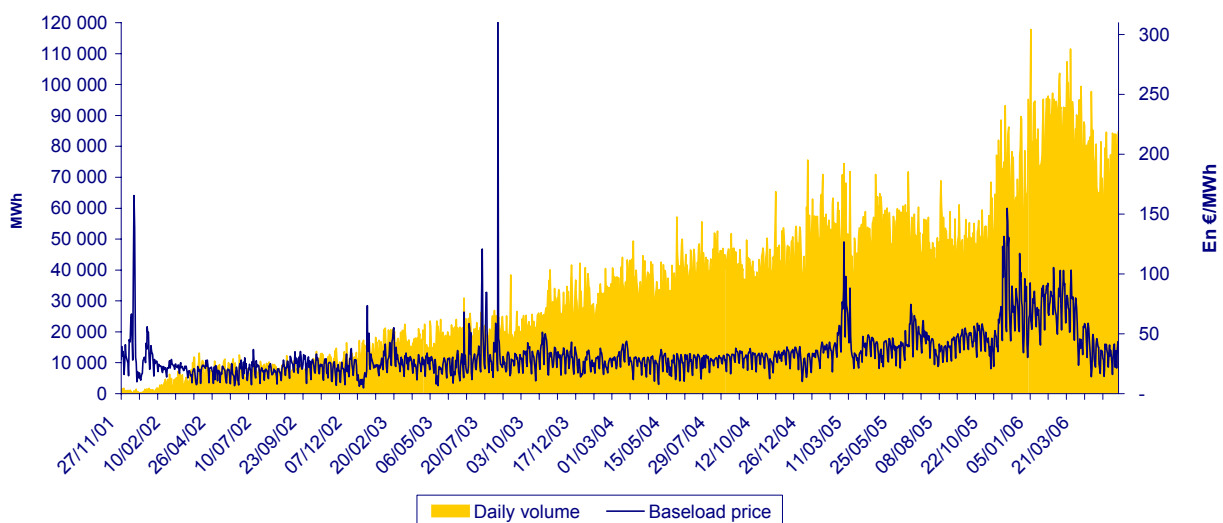
May 31, 2006

Traded volumes in MWh	Total market volume	Daily average	Annual Cumulated volume	Peakload volume (daily average)	Off-peak volume (daily average)	Highest	Market shares			
							Number of members	Average three most active members	Five most active members	
Month	Mar-06	2 758 561	88 986	7 812 489	41 424	47 562	111 528	51	12%	46%
	Apr-06	2 262 157	75 405	10 074 646	38 015	37 390	97 708	52	12%	45%
	May-06	2 283 152	73 650	12 357 798	36 231	37 419	84 801	52	11%	44%
Week	18	453 203	64 743	5 492 816	33 221	31 522	81 516	52	11%	41%
	19	532 326	76 047	6 025 142	37 599	38 448	84 635	52	12%	45%
	20	505 451	72 207	6 530 593	34 481	37 726	84 286	52	12%	45%
	21	545 822	77 975	7 076 415	38 018	39 956	83 938	52	11%	45%

		Average Price in €/MWh				
		Base 01-24	Peak 09-20	Off peak 1 01-08	Off peak 2 21-24	Volume weighted Base 01-24
Month	Mar-06	67,430	78,942	47,788	67,267	65,578
	Apr-06	40,037	46,169	29,226	43,266	40,213
	May-06	31,778	38,621	20,045	34,714	31,727
Week	18	28,037	33,912	18,063	30,360	28,528
	19	32,896	39,082	21,634	36,861	32,999
	20	31,102	37,400	20,694	33,025	30,738
	21	31,508	39,074	18,561	34,703	31,118

Variation against previous period (€)			
Base 01-24	Peak 09-20	Off peak 1 01-08	Off peak 2 21-24
-27,39	-32,77	-18,56	-24,00
-8,26	-7,55	-9,18	-8,55
4,86	5,17	3,57	6,50
-1,79	-1,68	-0,94	-3,84
0,41	1,67	-2,13	1,68

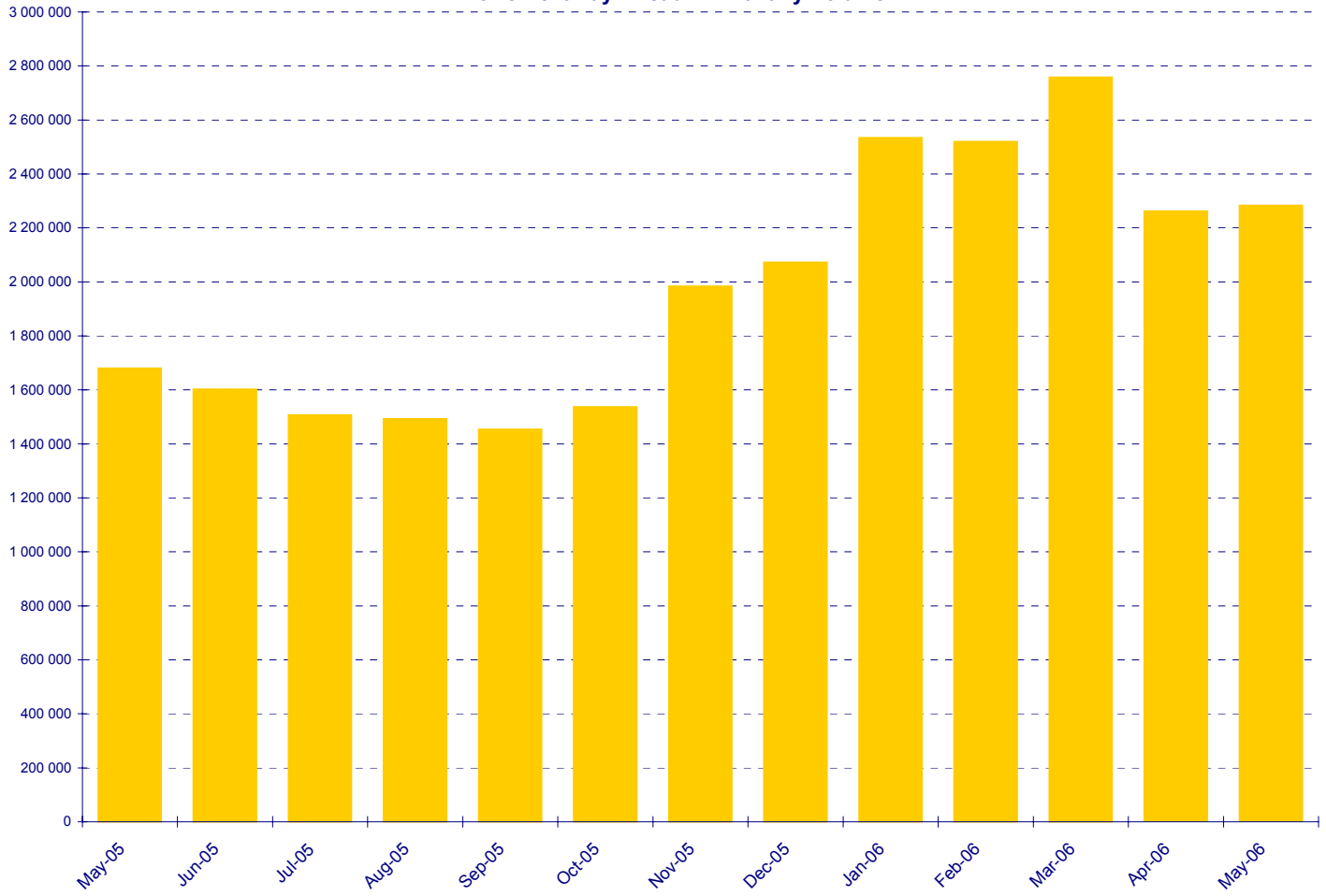
### Powernext Day-Ahead™: daily volume and baseload price



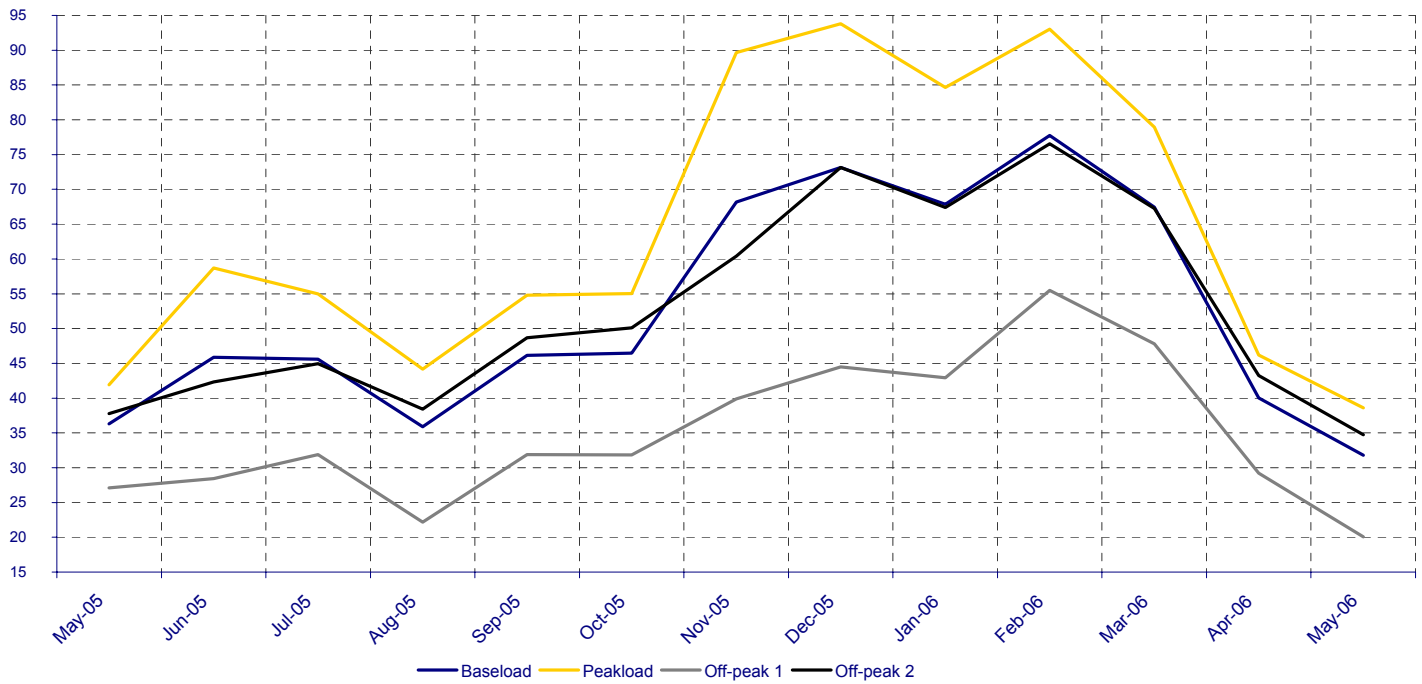


## Powernext Day-Ahead™ Monthly Overview

### Powernext Day-Ahead™ - Monthly Volume in MWh

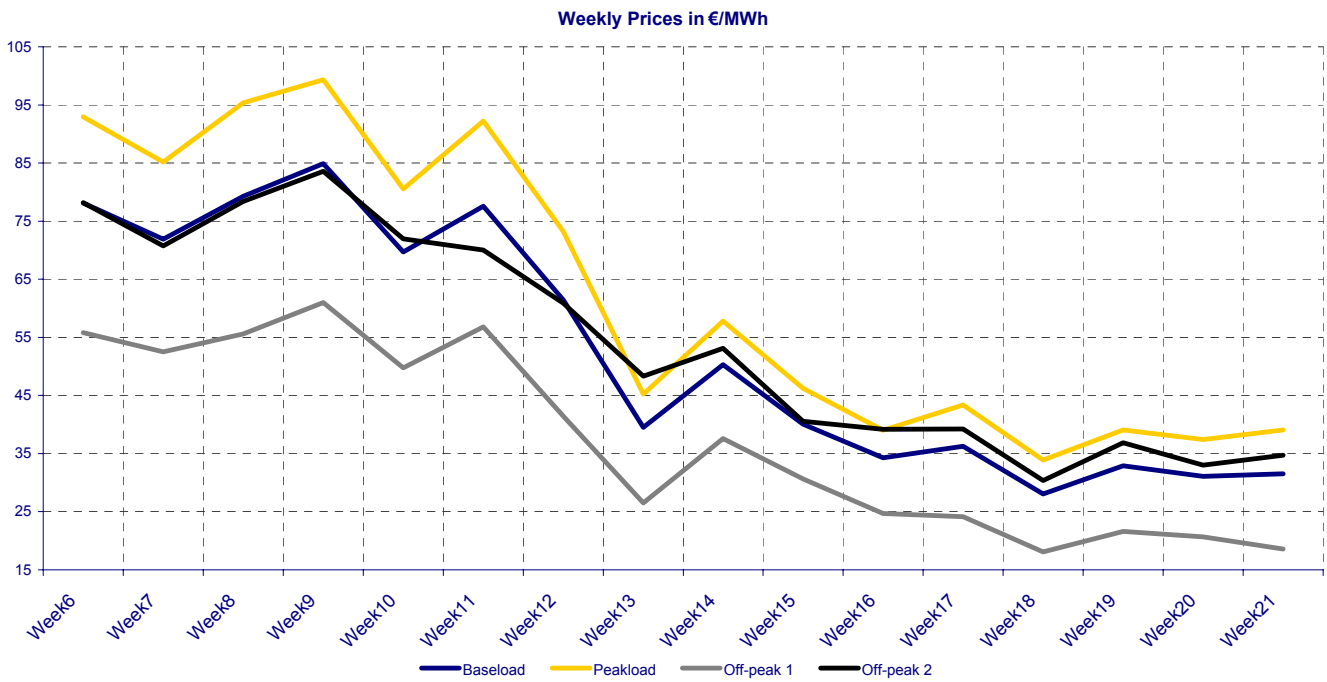
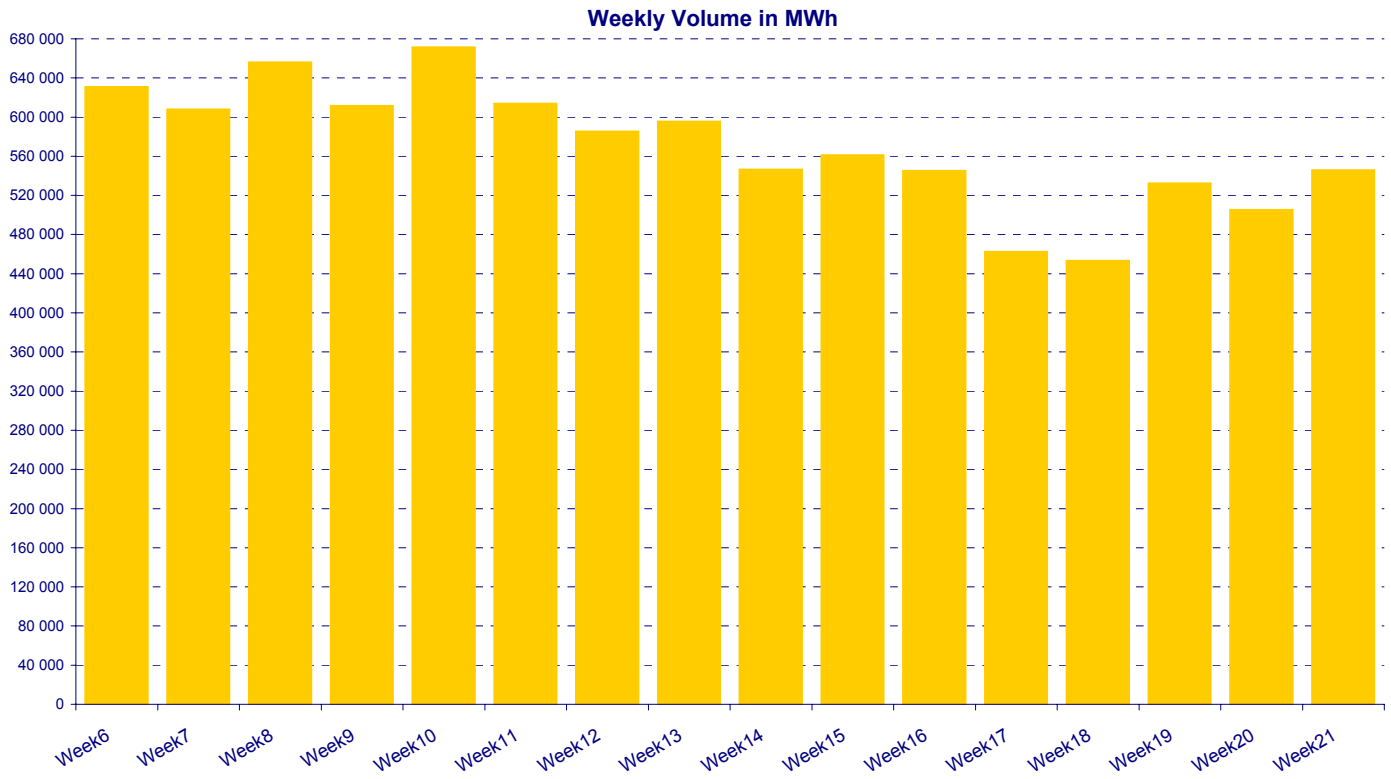


### Monthly Prices in €/MWh



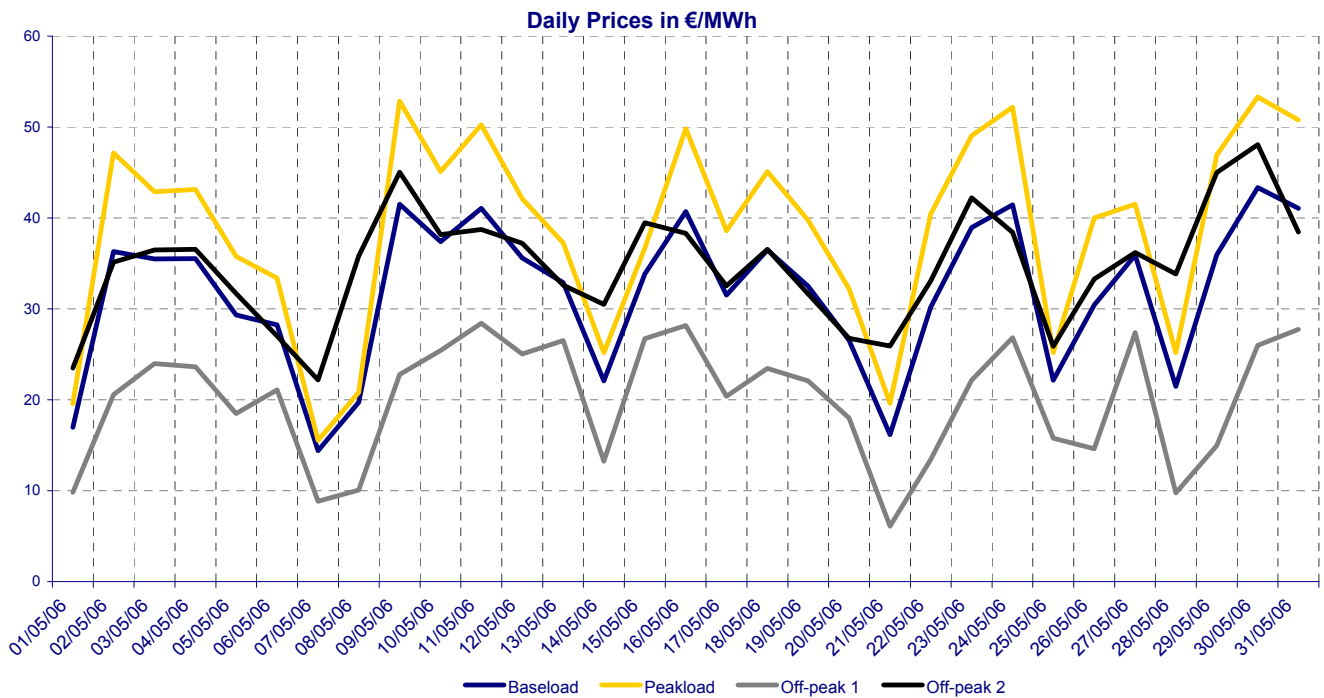
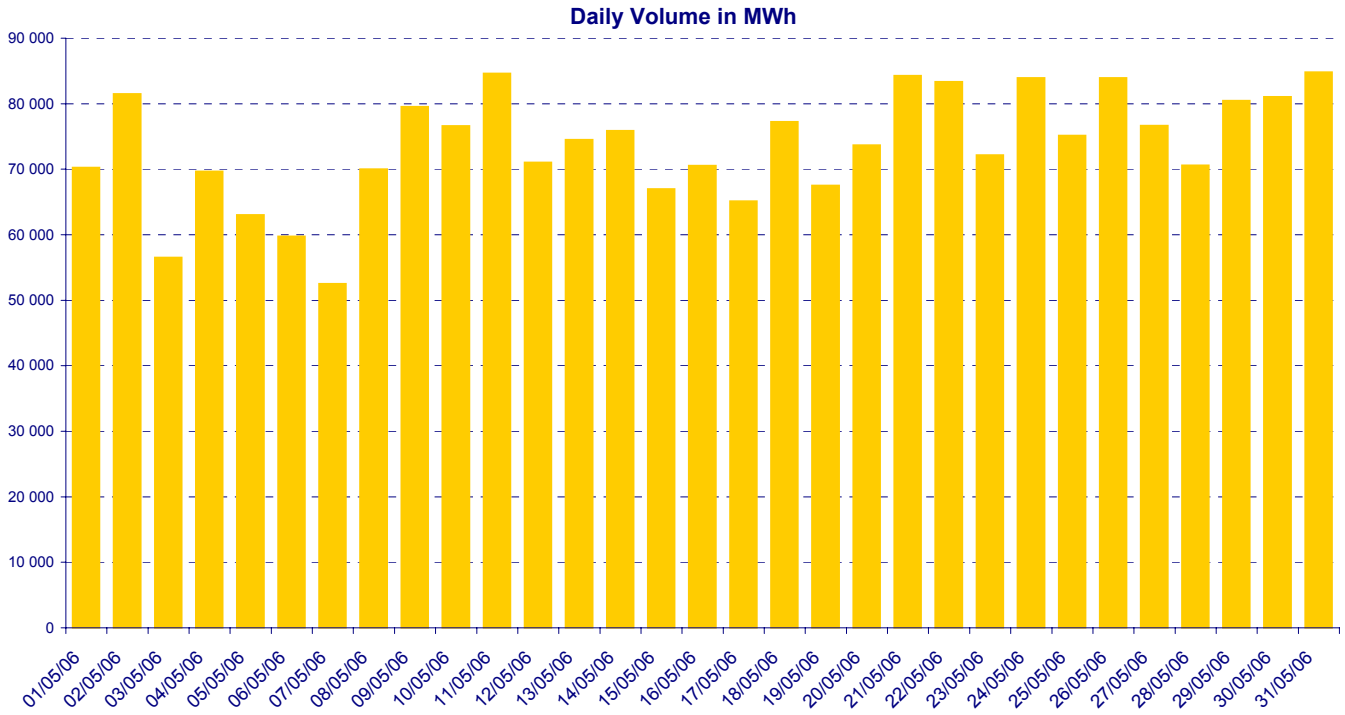


## Powernext Day-Ahead™ Weekly Overview



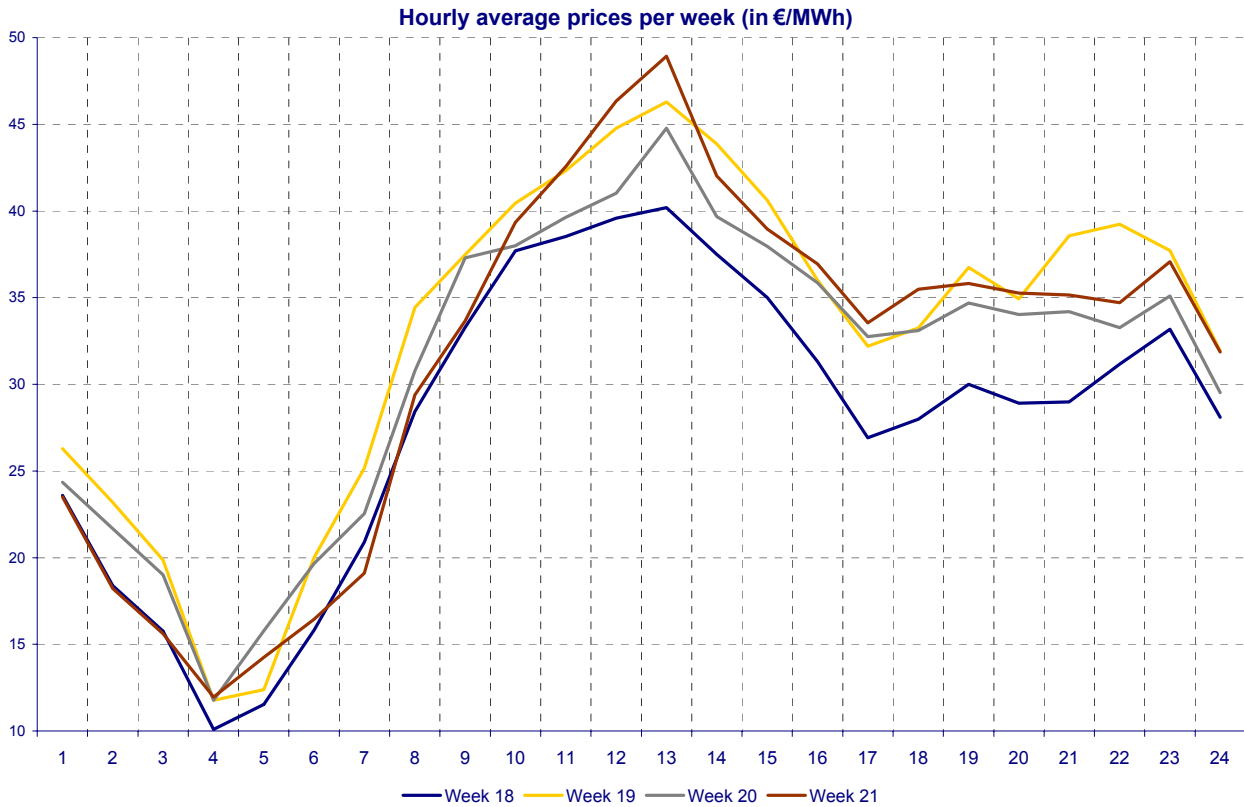


## Powernext Day-Ahead™ Daily Overview

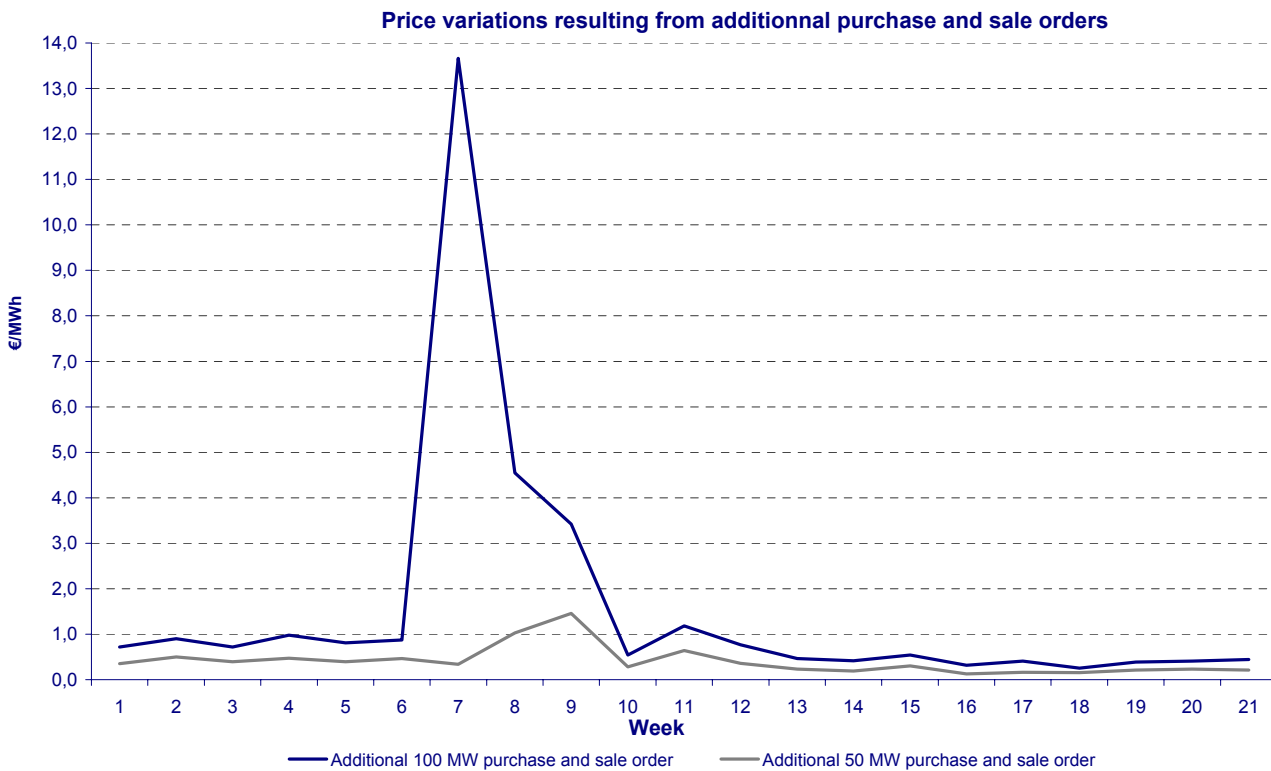




## Powernext Day-Ahead™ Hourly Overview

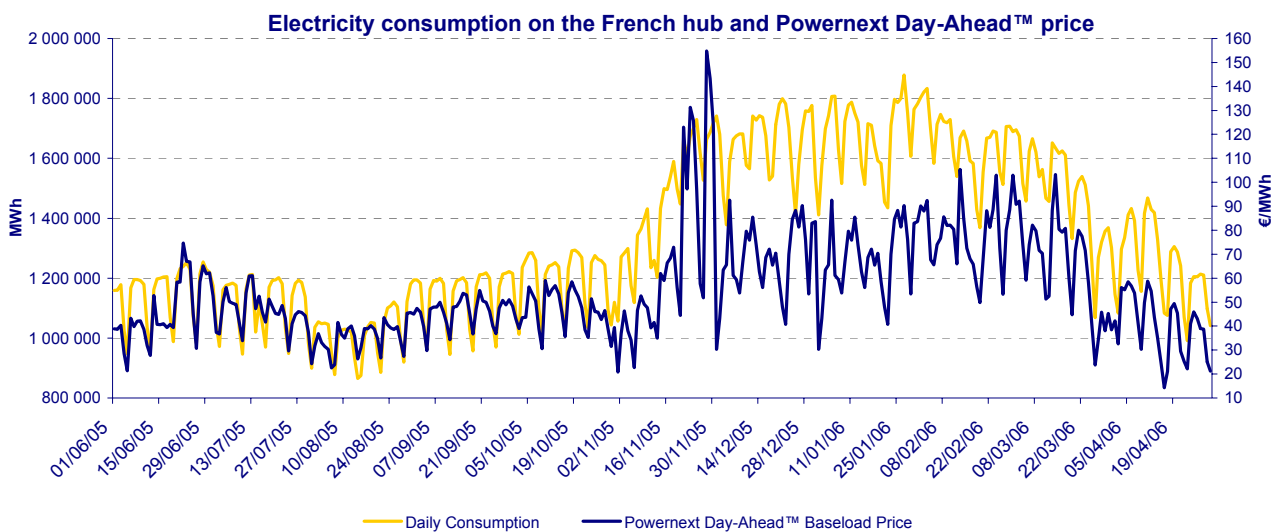
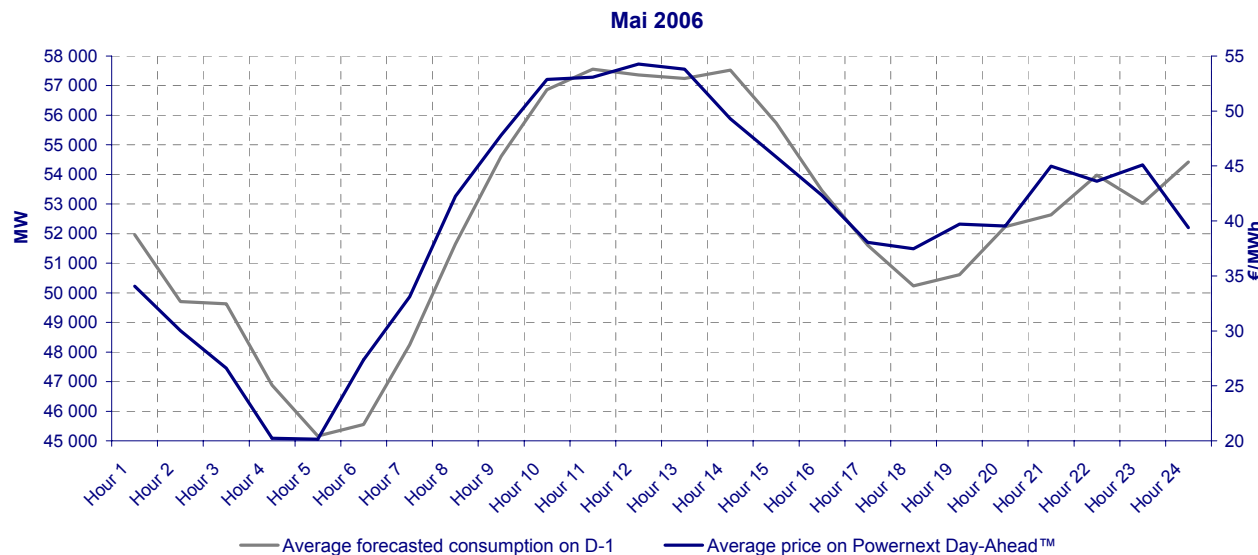
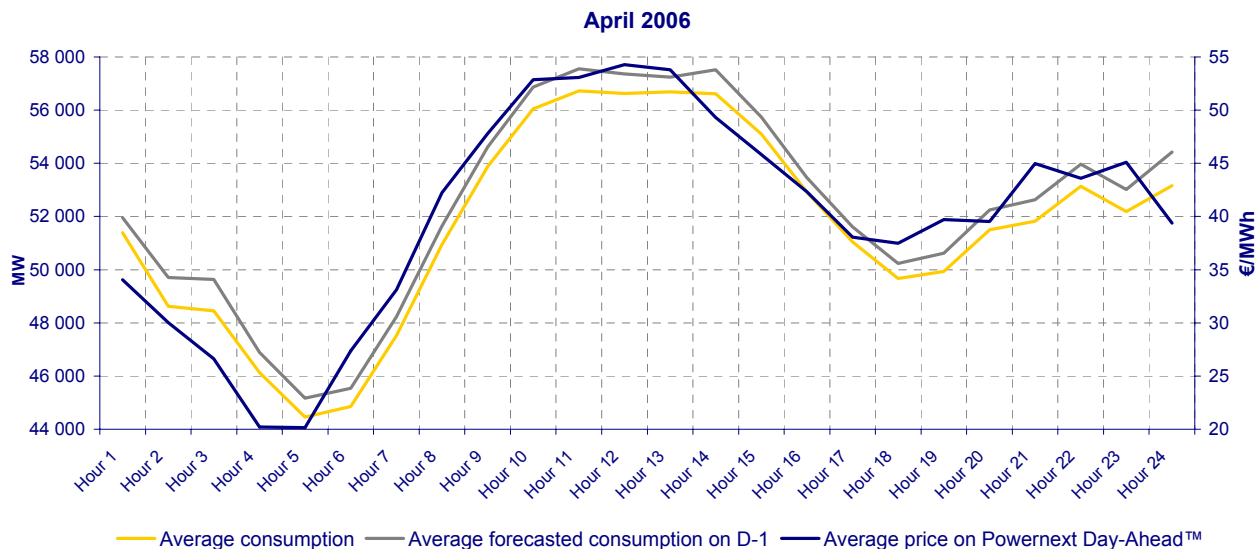


## Powernext Day-Ahead™ Market resilience





## Fundamentals : electricity consumption



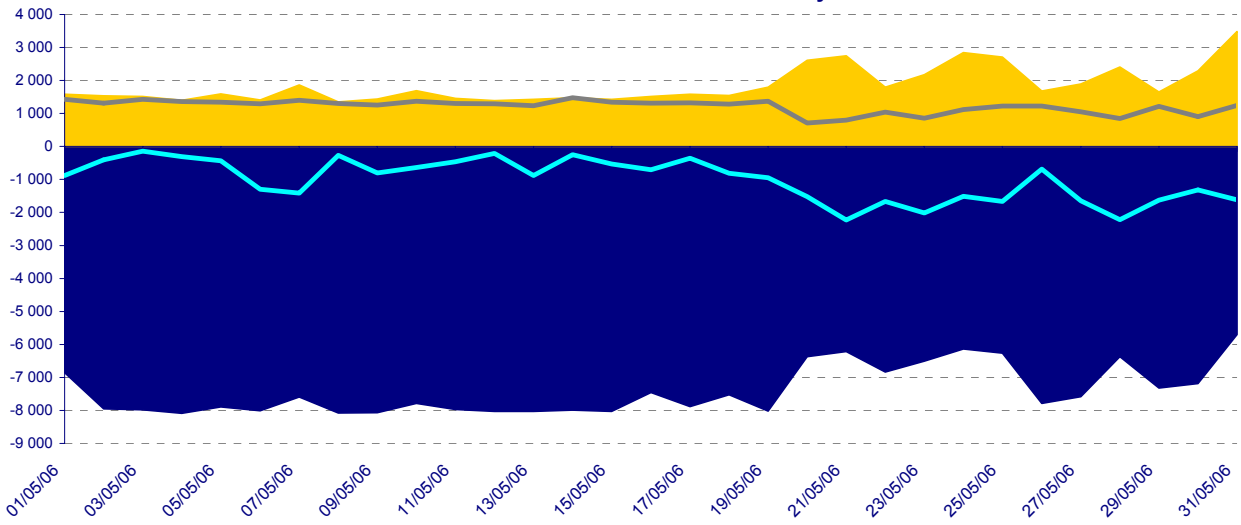
Source: <http://www.rte-France.com>



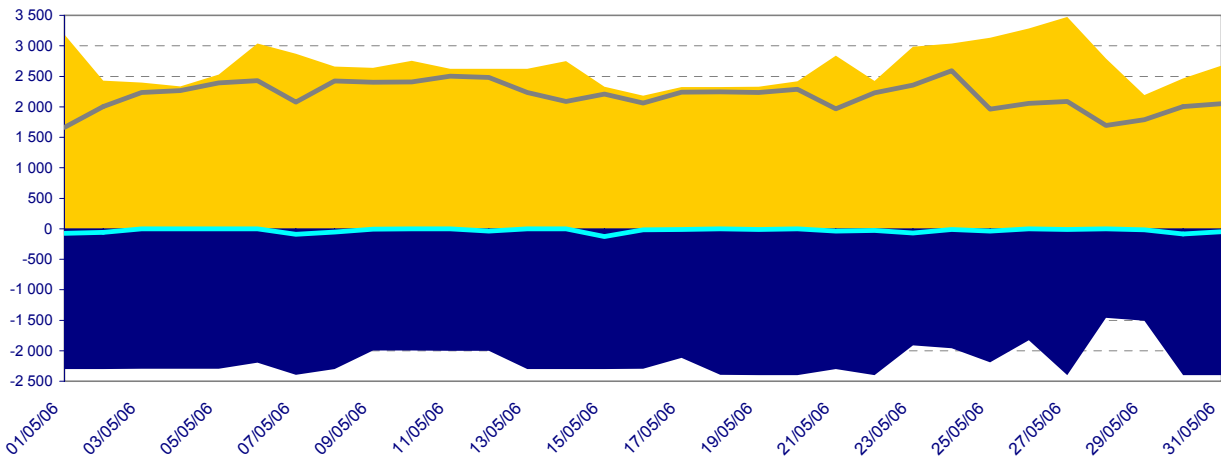
## Fundamentals : Transfer Capacities

■ Total Auction (Import)      ■ Total Auction (Export)  
■ Export nominations (Daily average in MW)      ■ Import nominations (Daily average in MW)

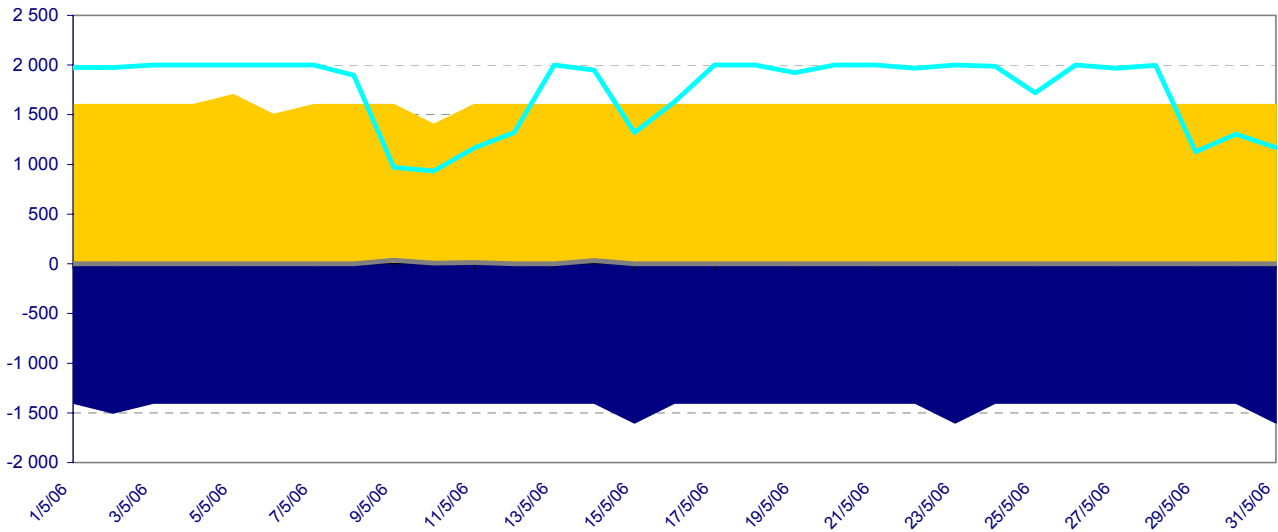
### Auctions results France-Germany



### Auction results France-Belgium

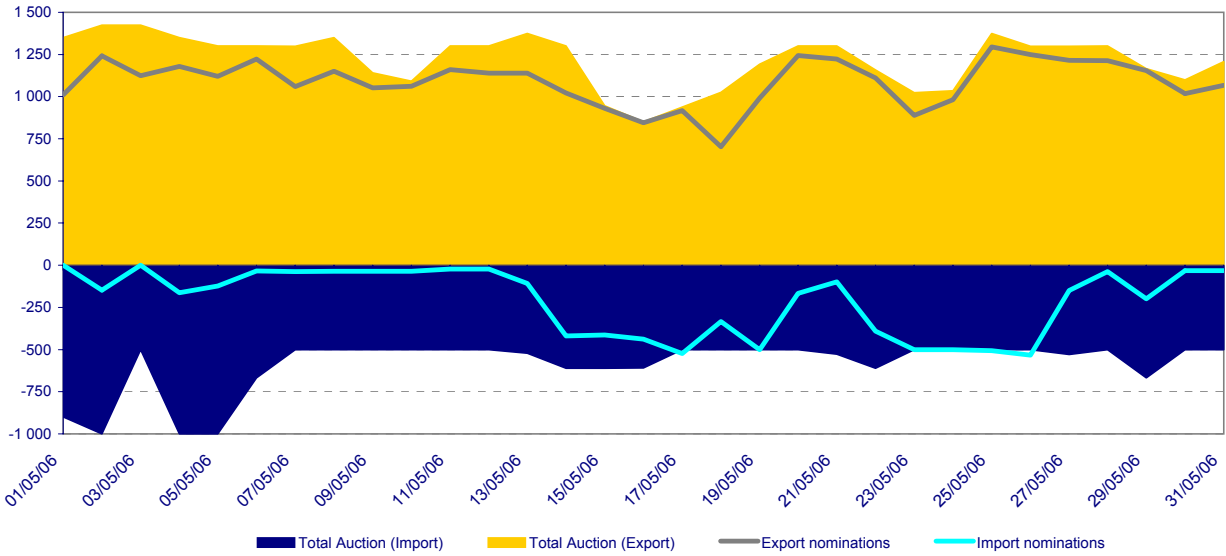


### Auction results France-UK

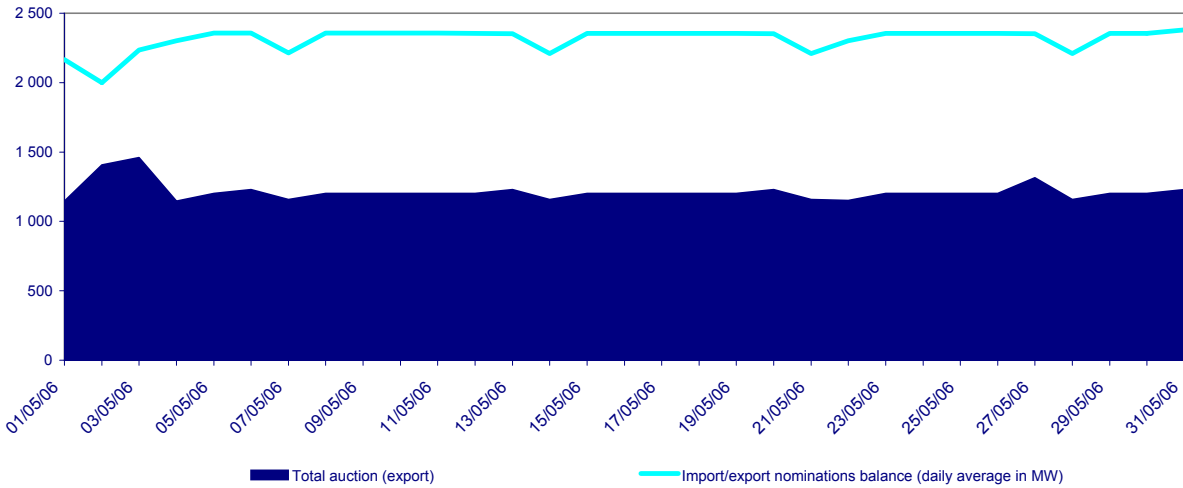




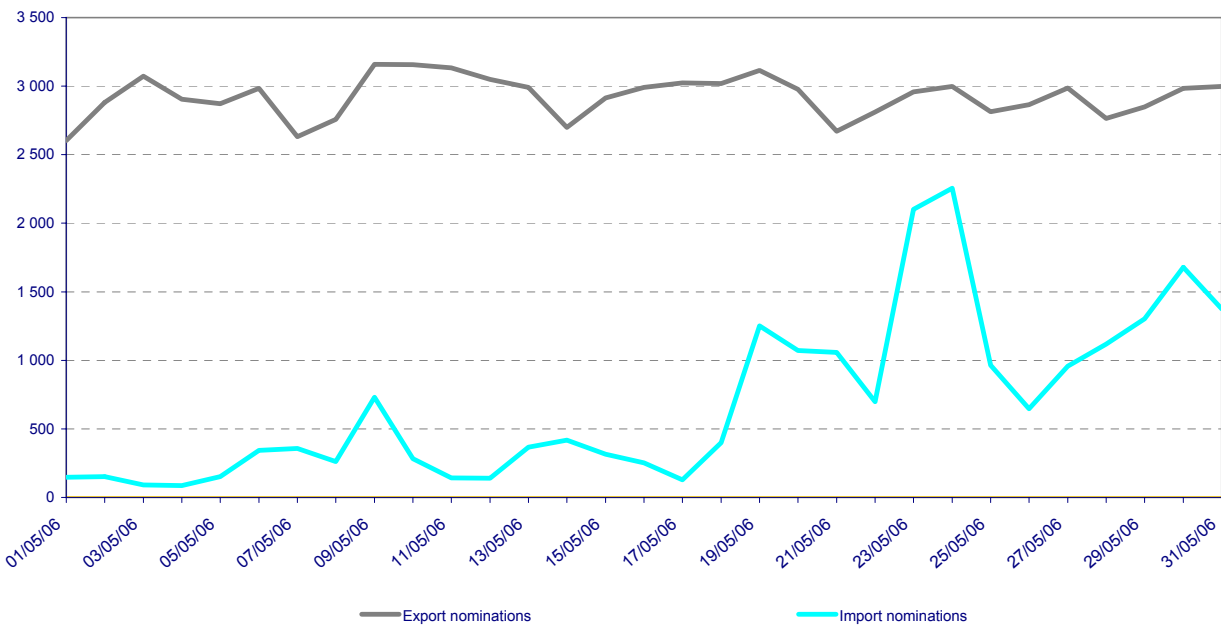
## Auction results France-Spain



## Auction results France-Italy



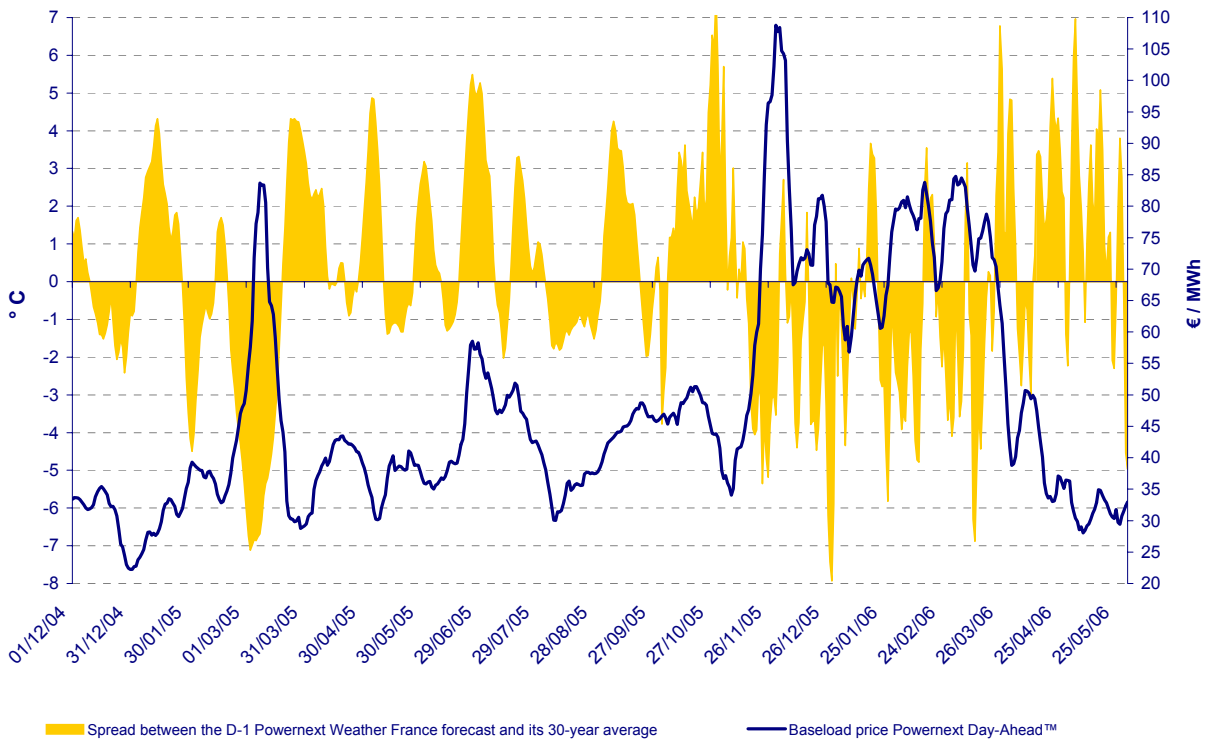
## Daily capacity allocation France-Switzerland



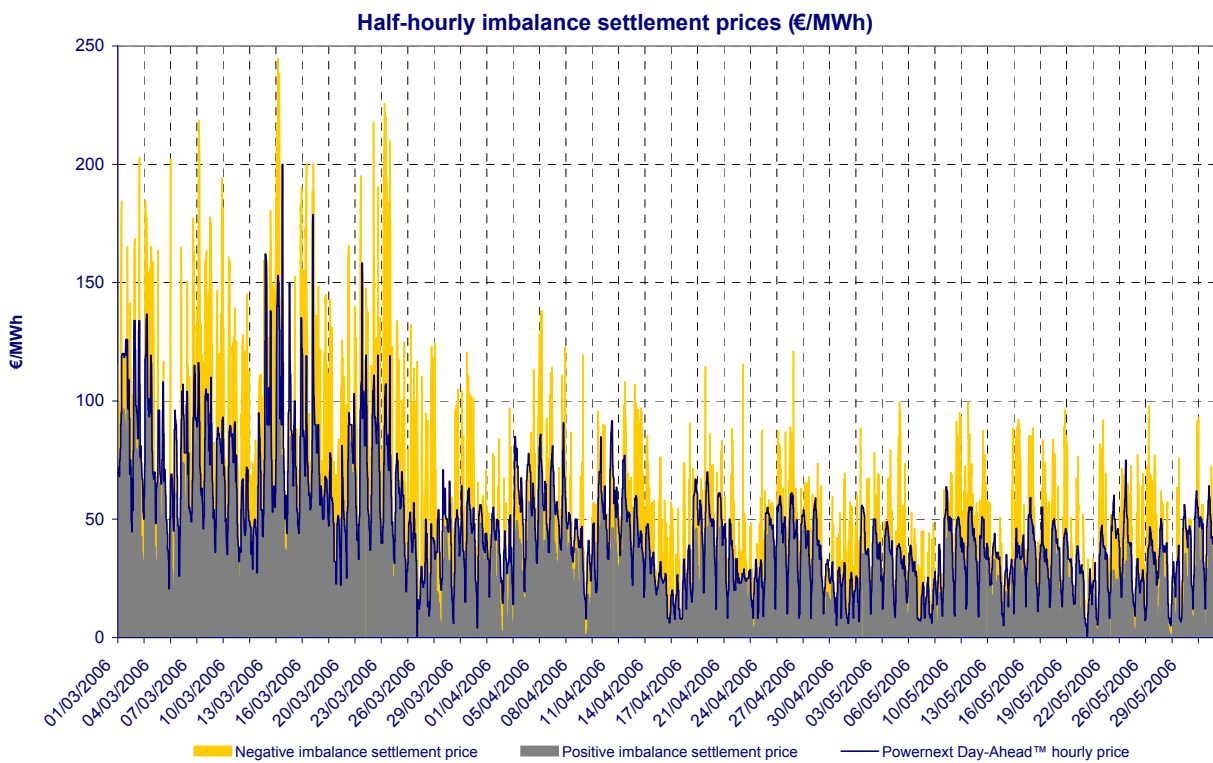
Sources: [www.rte-france.com](http://www.rte-france.com), [www.elia.be](http://www.elia.be) and [www.rwetransportnetzstrom.com](http://www.rwetransportnetzstrom.com)



## Fundamentals : Temperature in France



## Balancing mechanism





## CONTACTS

### Powernext S.A.

25, rue Louis Le Grand  
75002 PARIS  
tél. +33 (0)1 73 03 96 00  
fax +33 (0)1 73 03 96 01  
[information@powernext.fr](mailto:information@powernext.fr)

### Marketing

Audrey MAHUET : 33 (0) 1 73 03 96 05  
[a.mahuet@powernext.fr](mailto:a.mahuet@powernext.fr)  
Sovann KHOU : 33 (0) 1 73 03 96 07  
[s.khou@powernext.fr](mailto:s.khou@powernext.fr)

### Marketing and Sales

Thierry CAROL : 33 (0) 1 73 03 96 04  
[t.carol@powernext.fr](mailto:t.carol@powernext.fr)  
Richard KATZ : 33 (0) 1 73 03 96 02  
[r.katz@powernext.fr](mailto:r.katz@powernext.fr)  
Philippe CHAUVANCY : 33 (0) 1 73 03 96 03  
[p.chauvancy@powernext.fr](mailto:p.chauvancy@powernext.fr)

