

# Natural Gas Spot



## January

	Mo	Tu	We	Th	Fr	Sa	Su
53					1	2	3
01	4	5	6	7	8	9	10
02	11	12	13	14	15	16	17
03	18	19	20	21	22	23	24
04	25	26	27	28	29	30	31

- 1 New Year's Day
- 4 Day after New Year's Day
- 7 Day after Epiphany

## February

	Mo	Tu	We	Th	Fr	Sa	Su
05	1	2	3	4	5	6	7
06	8	9	10	11	12	13	14
07	15	16	17	18	19	20	21
08	22	23	24	25	26	27	28

## March

	Mo	Tu	We	Th	Fr	Sa	Su
09	1	2	3	4	5	6	7
10	8	9	10	11	12	13	14
11	15	16	17	18	19	20	21
12	22	23	24	25	26	27	28
13	29	30	31				

## April

	Mo	Tu	We	Th	Fr	Sa	Su
13				1	2	3	4
14	5	6	7	8	9	10	11
15	12	13	14	15	16	17	18
16	19	20	21	22	23	24	25
17	26	27	28	29	30		

- 2 Good Friday
- 5 Easter Monday

## May

	Mo	Tu	We	Th	Fr	Sa	Su
17						1	2
18	3	4	5	6	7	8	9
19	10	11	12	13	14	15	16
20	17	18	19	20	21	22	23
21	24	25	26	27	28	29	30
22	31						

- 3 Early May Bank Holiday
- 14 Day after Ascension Day
- 25 Day after Whit Monday
- 31 Spring Bank Holiday

## June

	Mo	Tu	We	Th	Fr	Sa	Su
22		1	2	3	4	5	6
23	7	8	9	10	11	12	13
24	14	15	16	17	18	19	20
25	21	22	23	24	25	26	27
26	28	29	30				

- 4 Day after Corpus Christi

In case of trade cancellation,  
please call the following number  
within 10 minutes:

**+33 1 73 03 96 24**

### Customer Care:

- +33 1 73 03 76 88
- membership@powernext.com

### Clearing:

- +49 341 24680 444
- clearing@ecc.de

### Market Operations:

- +33 1 73 03 96 24
- gas@powernext.com

### Sales:

- FR: +33 1 73 03 96 09
- DE: +49 341 2156 215
- GB: +44 207 862 7346
- AT: +43 1 270 2700 28550
- DK: +45 3145 1165
- CZ: +420 221 832 102
- Benelux: +31 653567910
- sales@eex.com

Trading is open 24/7 with the exception of CZ VTP and PVB contracts, and their related spreads, which are open for trading from 8:00 to 18:00 CET on Exchange Days  
EOD Index Calculation Period: 17:15–17:30 CET

## July

	Mo	Tu	We	Th	Fr	Sa	Su
26				1	2	3	4
27	5	6	7	8	9	10	11
28	12	13	14	15	16	17	18
29	19	20	21	22	23	24	25
30	26	27	28	29	30	31	

6 Day after St Cyril and St Methodius Day  
15 Day after Bastille Day

## August

	Mo	Tu	We	Th	Fr	Sa	Su
30							1
31	2	3	4	5	6	7	8
32	9	10	11	12	13	14	15
33	16	17	18	19	20	21	22
34	23	24	25	26	27	28	29
35	30	31					

30 Summer Bank Holiday

## September

	Mo	Tu	We	Th	Fr	Sa	Su
35			1	2	3	4	5
36	6	7	8	9	10	11	12
37	13	14	15	16	17	18	19
38	20	21	22	23	24	25	26
39	27	28	29	30			

29 Day after Czech Statehood Day

## October

	Mo	Tu	We	Th	Fr	Sa	Su
39					1	2	3
40	4	5	6	7	8	9	10
41	11	12	13	14	15	16	17
42	18	19	20	21	22	23	24
43	25	26	27	28	29	30	31

27 Day after Austrian National Day

## November

	Mo	Tu	We	Th	Fr	Sa	Su
44	1	2	3	4	5	6	7
45	8	9	10	11	12	13	14
46	15	16	17	18	19	20	21
47	22	23	24	25	26	27	28
48	29	30					

2 Day after All Saints' Day  
18 Day after Day of repentance and prayer

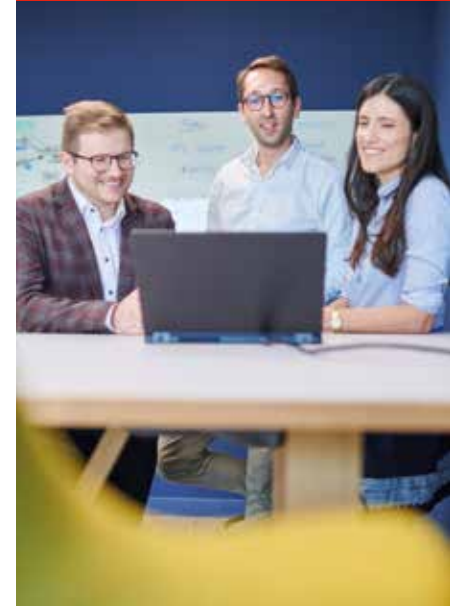
## December

	Mo	Tu	We	Th	Fr	Sa	Su
48			1	2	3	4	5
49	6	7	8	9	10	11	12
50	13	14	15	16	17	18	19
51	20	21	22	23	24	25	26
52	27	28	29	30	31		

9 Day after Immaculate Conception Individual  
27 Christmas Day  
28 Boxing Day  
29 Day after Christmas and Boxing Day

In case of trade cancellation, please call the following number within 10 minutes:

+33 1 73 03 96 24



Trading is open 24/7 with the exception of CZ VTP and PVB contracts, and their related spreads, which are open for trading from 8:00 to 18:00 CET on Exchange Days  
 EOD Index Calculation Period: 17:15–17:30 CET

## January

	Mo	Tu	We	Th	Fr	Sa	Su
53					1	2	3
01	4	5	6	7	8	9	10
02	11	12	13	14	15	16	17
03	18	19	20	21	22	23	24
04	25	26	27	28	29	30	31

- 1 New Year's Day
- 15 JKM LNG Feb 2021
- 27 Options Feb 2021
- 28 Physical Futures Feb 2021
- 29 EGSF Futures Jan 2021

## April

	Mo	Tu	We	Th	Fr	Sa	Su
13				1	2	3	4
14	5	6	7	8	9	10	11
15	12	13	14	15	16	17	18
16	19	20	21	22	23	24	25
17	26	27	28	29	30		

- 2 Good Friday
- 5 Easter Monday
- 15 JKM LNG May 2021
- 26 Options May 2021
- 29 Physical Futures May 2021, EGSF Futures Apr 2021

## February

	Mo	Tu	We	Th	Fr	Sa	Su
05	1	2	3	4	5	6	7
06	8	9	10	11	12	13	14
07	15	16	17	18	19	20	21
08	22	23	24	25	26	27	28

- 15 JKM LNG Mar 2021
- 24 Options Mar 2021
- 25 Physical Futures Mar 2021
- 26 EGSF Futures Feb 2021

## May

	Mo	Tu	We	Th	Fr	Sa	Su
17						1	2
18	3	4	5	6	7	8	9
19	10	11	12	13	14	15	16
20	17	18	19	20	21	22	23
21	24	25	26	27	28	29	30
22	31						

- 14 JKM LNG Jun 2021
- 27 Options Jun 2021
- 28 Physical Futures Jun 2021, EGSF Futures May 2021

## March

	Mo	Tu	We	Th	Fr	Sa	Su
09	1	2	3	4	5	6	7
10	8	9	10	11	12	13	14
11	15	16	17	18	19	20	21
12	22	23	24	25	26	27	28
13	29	30	31				

- 15 JKM LNG Apr 2021
- 26 Options Apr 2021
- 29 Physical and EGSF F 2Q2021, Sum21
- 30 Physical Futures Apr 2021, EGSF Futures Mar 2021

## June

	Mo	Tu	We	Th	Fr	Sa	Su
22		1	2	3	4	5	6
23	7	8	9	10	11	12	13
24	14	15	16	17	18	19	20
25	21	22	23	24	25	26	27
26	28	29	30				

- 15 JKM LNG Jul 2021
- 25 Options Jul 2021
- 28 Physical and EGSF F 3Q 2021
- 29 Physical Futures Jul 2021, EGSF Futures Jun 2021

In case of trade cancellation, please call the following number within 10 minutes:

+33 1 73 03 96 24

### Customer Care:

- +33 1 73 03 76 88
- membership@powernext.com

### Clearing:

- +49 341 24680 444
- clearing@ecc.de

### Market Operations:

- +33 1 73 03 96 24
- gas@powernext.com

### Sales:

- FR: +33 1 73 03 96 09
- DE: +49 341 2156 215
- GB: +44 207 862 7555
- AT: +43 1 270 2700 28550
- DK: +45 3145 1165
- CZ: +420 221 832 102
- Benelux: +31 653567910
- sales@eex.com

## July

Mo	Tu	We	Th	Fr	Sa	Su
26			1	2	3	4
27	5	6	7	8	9	10 11
28	12	13	14	15	16	17 18
29	19	20	21	22	23	24 25
30	26	27	28	29	30	31

15 JKM LNG Aug 2021

27 Options Aug 2021

29 Physical Futures Aug 2021

30 EGSi Futures Jul 2021

## August

Mo	Tu	We	Th	Fr	Sa	Su
30						1
31	2	3	4	5	6	7 8
32	9	10	11	12	13	14 15
33	16	17	18	19	20	21 22
34	23	24	25	26	27	28 29
35	30	31				

13 JKM LNG Sep 2021

27 Options Sep 2021

30 Physical Futures Sep 2021,  
EGSi Futures Aug 2021

## September

Mo	Tu	We	Th	Fr	Sa	Su
35		1	2	3	4	5
36	6	7	8	9	10	11 12
37	13	14	15	16	17	18 19
38	20	21	22	23	24	25 26
39	27	28	29	30		

15 JKM LNG Oct 2021

24 Options Oct 2021

28 Physical and EGSi F 4Q2021, Win21

29 Physical Futures Oct 2021,  
EGSi Futures Sep 2021

## October

Mo	Tu	We	Th	Fr	Sa	Su
39				1	2	3
40	4	5	6	7	8	9 10
41	11	12	13	14	15	16 17
42	18	19	20	21	22	23 24
43	25	26	27	28	29	30 31

15 JKM LNG Nov 2021

27 Options Nov 2021

28 Physical Futures Nov 2021

29 EGSi Futures Oct 2021

## November

Mo	Tu	We	Th	Fr	Sa	Su
44	1	2	3	4	5	6 7
45	8	9	10	11	12	13 14
46	15	16	17	18	19	20 21
47	22	23	24	25	26	27 28
48	29	30				

15 JKM LNG Dec 2021

26 Options Dec 2021

29 Physical Futures Dec 2021,  
EGSi Futures Nov 2021

## December

Mo	Tu	We	Th	Fr	Sa	Su
48		1	2	3	4	5
49	6	7	8	9	10	11 12
50	13	14	15	16	17	18 19
51	20	21	22	23	24	25 26
52	27	28	29	30	31	

15 JKM LNG Jan 2022

27 Options Jan 2022

29 Physical and EGSi F 1Q2022, Cal22

30 Physical Futures Jan 2022,  
EGSi Futures Dec 2022

In case of trade cancellation,  
please call the following number  
within 10 minutes:

+33 1 73 03 96 24

